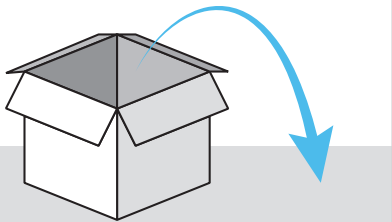
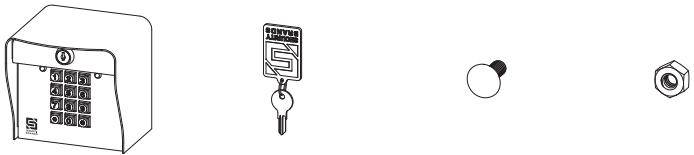




1 Carefully unpack box.

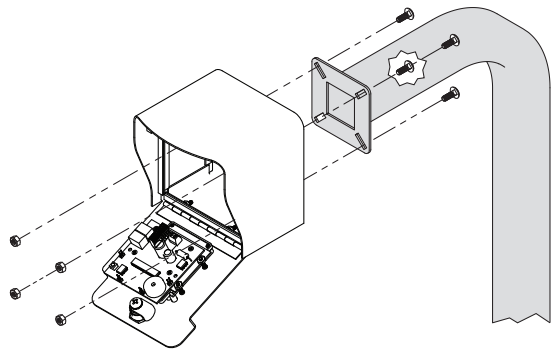


2 Make sure you have everything shown here.



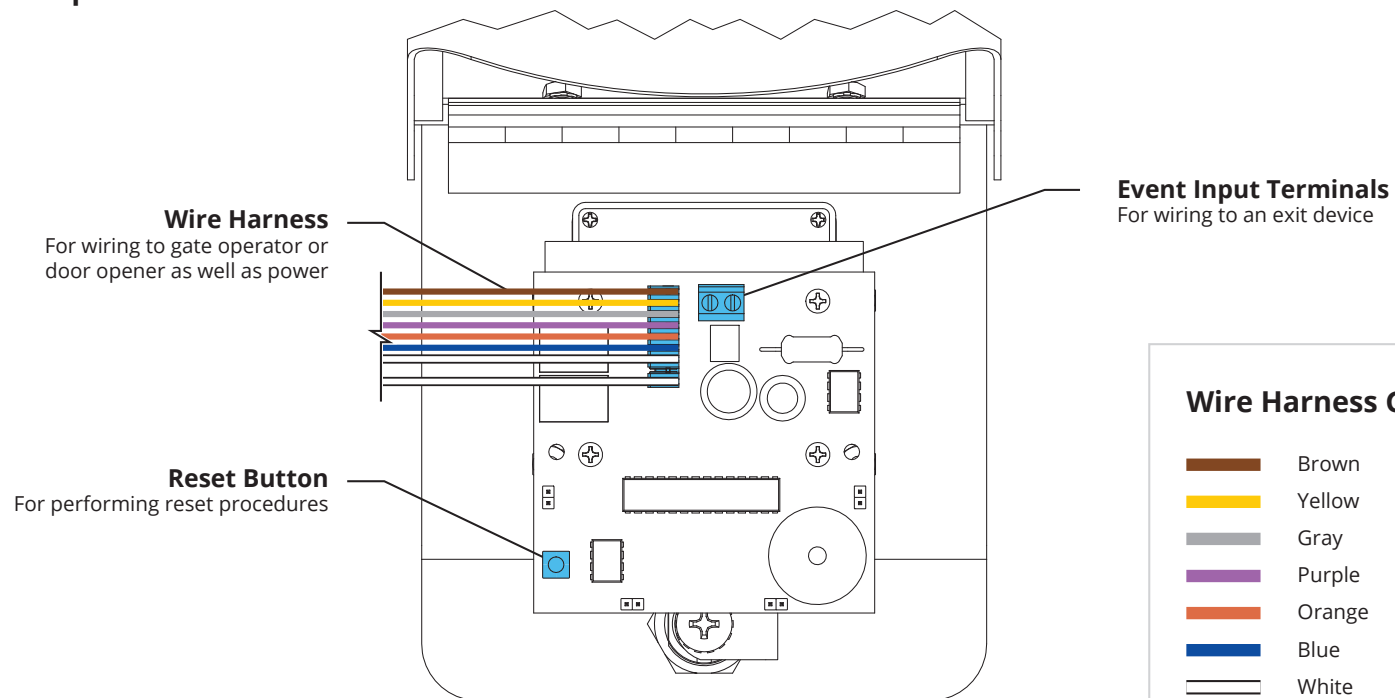
Keypad Unit Key Carriage Bolt (4x) Hex Nut (4x)

3 Unlock and open front panel of keypad unit, then using carriage bolts and hex nuts, attach unit to pedestal as shown.




What's what?

Important components labeled



Unit shown with front panel fully open.

Wire Harness Guide

	Brown	COM (Relay A)
	Yellow	N/C (Relay B)
	Gray	COM (Relay B)
	Purple	N/O (Relay B)
	Orange	N/O (Relay A)
	Blue	N/C (Relay A)
	White	Power
	White	Power

Keypad Unit Front Panel

Continued on next page...



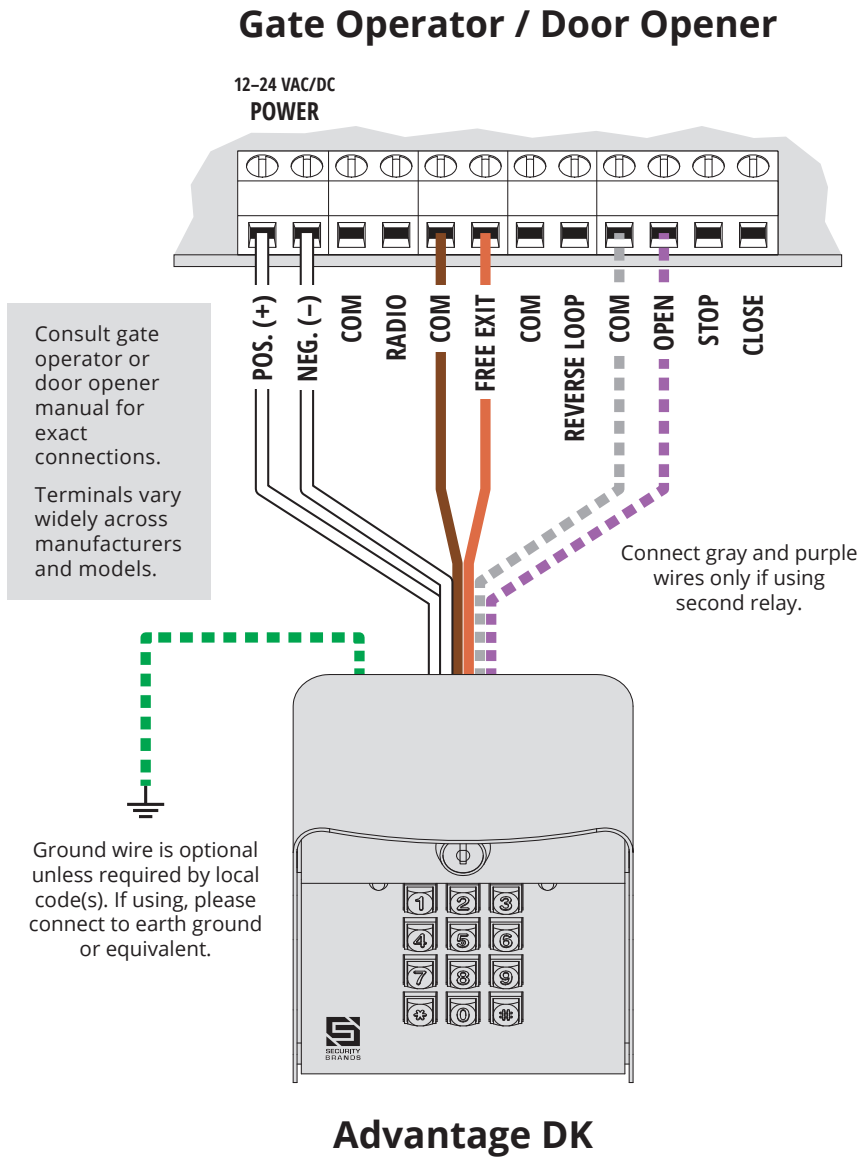
WARNING!

AUTOMATIC GATES CAN CAUSE SERIOUS INJURY OR DEATH!

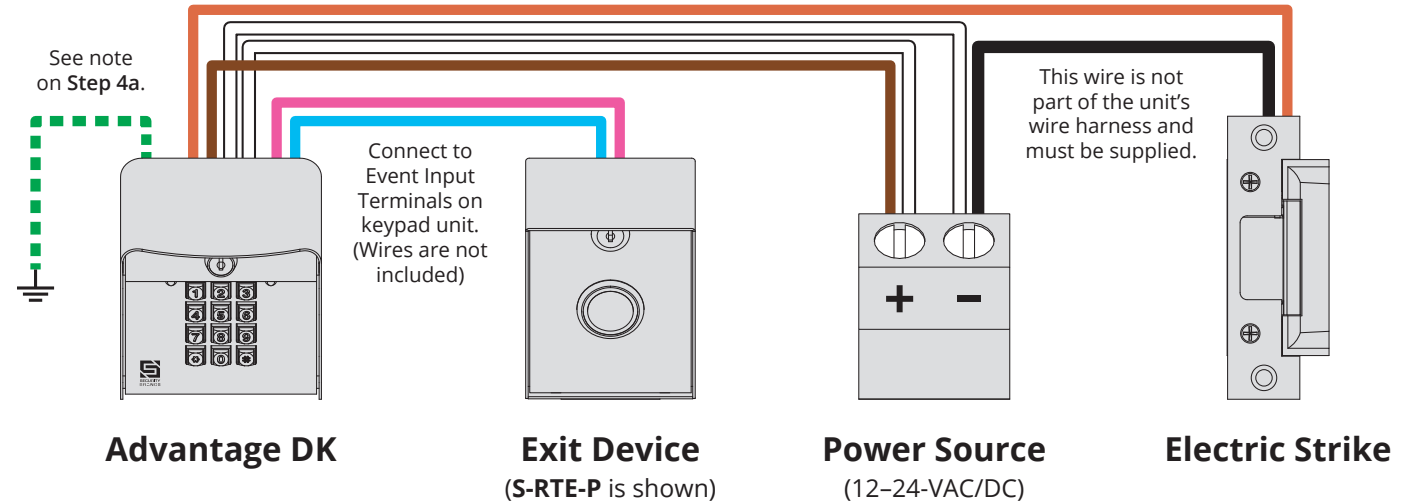
ALWAYS CHECK that the GATE PATH IS CLEAR BEFORE OPERATING!

Reversing or other safety devices should **ALWAYS BE USED!**

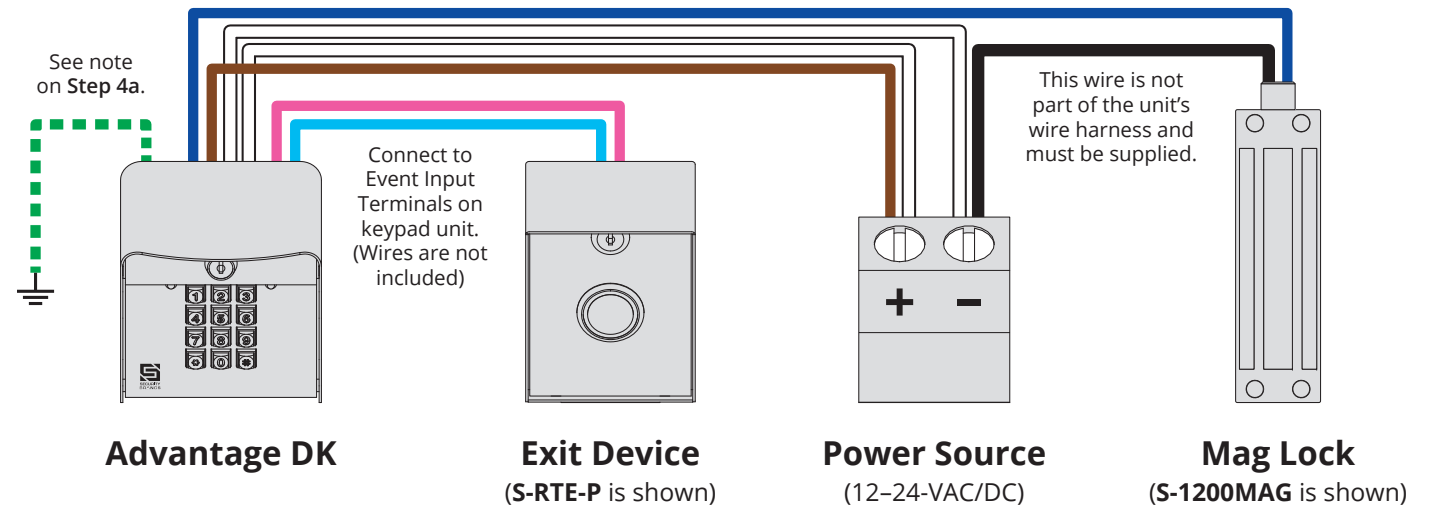
4a Make the connections Wiring for Gate Operator or Door Opener



4b Make the connections Wiring for Door Strike and Exit Device



4c Make the connections Wiring for Mag Lock and Exit Device




5 Add Access Code(s) to Relay A.
(To add multiple codes, enter each of them before pressing pound key)


1 2 5 1 → 1 → ? ? ? ? → #

Master Code (can be changed) Sub Mode Access Code(s) (4 digits; numbers only)

NOTE: The Master Code is for programming only and will not trigger the relay. The green arrow indicates a "good" tone on the keypad. An incorrect entry will sound a "bad" tone.

6 Make sure gate path is clear, then enter access code on keypad and confirm gate opens.





INSTALLATION COMPLETE!

Your system is ready to use.

A1 Additional Programming

Delete Code(s)
(To delete multiple codes, enter each of them before pressing pound key)

1 2 5 1 → 2 → ? ? ? ? → #

Master Code (can be changed) Sub Mode Code(s) to Be Deleted (4 digits; numbers only)

Change Master Code

1 2 5 1 → 3 → ? ? ? ? → #

Current Master Code (1251 is default) Sub Mode New Master Code (4 digits; numbers only)

Set Sleep Code

1 2 5 1 → 4 → ? ? ? ? → #

Master Code (can be changed) Sub Mode Sleep Code (4 digits; numbers only)

NOTE: Green arrow indicates "good" tone on keypad. Always wait for good tone before moving on.

Things to Know

Status LEDs
The yellow LED comes on when the unit is in Programming Mode. The red LED comes on when a relay is active.

The Star Key (*)
The star key deletes your current entry. If you happen to make a mistake keying in a code, simply press the star key to delete the entire entry and start over.

The Pound Key (#)
The pound key is good for one thing and one thing only: exiting Programming Mode. Whenever you're in Programming Mode, simply press the pound key to get out.

Reset Procedures
If for some reason the Master Code is forgotten or the unit needs to be reset to factory defaults, two reset procedures are available: **Master Reset** and **Unit Reset**.

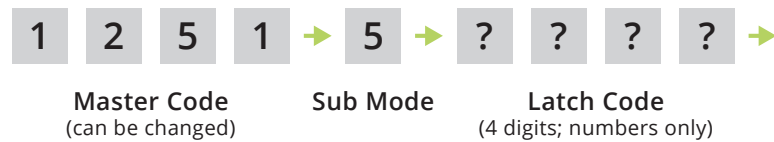
These procedures can be found on **Page 5** of this guide.

Programming Sub Modes

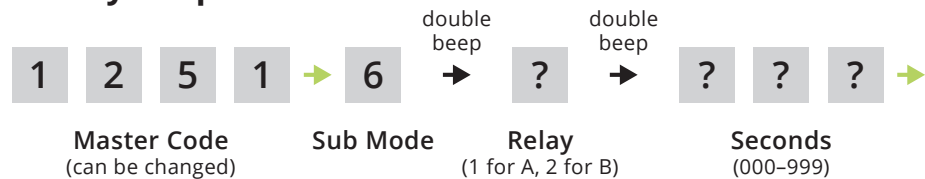
- 1 Add Access Code(s) to Relay A
- 2 Delete Code(s)
- 3 Change Master Code
- 4 Set Sleep Code
- 5 Set Latch Code (Relay A ONLY)
- 6 Set Relay Output Time
- 7 Add Access Code(s) to Relay B
- 8 Configure "Three Strikes, You're Out"
- 9 Configure Event Input
- 0 Delete All Codes

A2 Additional Programming (continued)

Set Latch Code

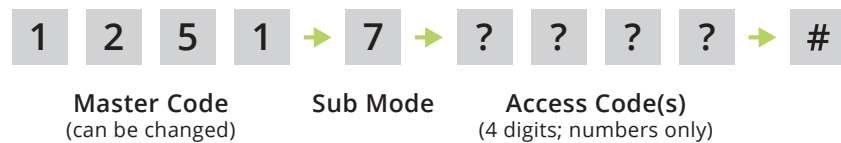


Set Relay Output Time



Add Access Code(s) to Relay B

(To add multiple codes, enter each of them before pressing pound key)



Configure “Three Strikes, You’re Out”

(This feature is designed to deter unauthorized users who enter an incorrect code three times in a row. When this happens, the unit will sound an alarm and flash the status LEDs for 30 seconds, and it will go into a period of lockdown for a full 90 seconds.)

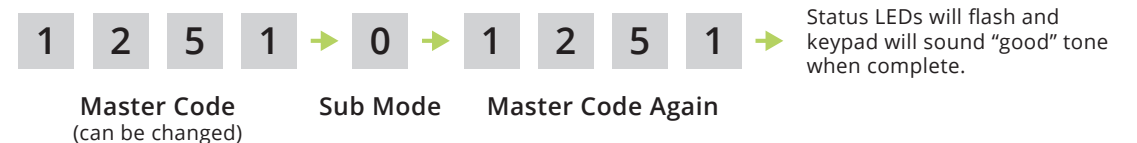
Check Status



Toggle On or Off



Delete All Codes (Cannot Be Undone)



NOTE: Green arrow indicates “good” tone on keypad. Always wait for good tone before moving on.

A3 Additional Programming (continued)

Configure Event Input

(Allows an external device to affect keypad operation or trigger a relay)

Modes

Mode 1 - Remote Inactive Mode

Disables all Relay A codes when input is received from external device

Mode 2 - Arming Circuit Mode

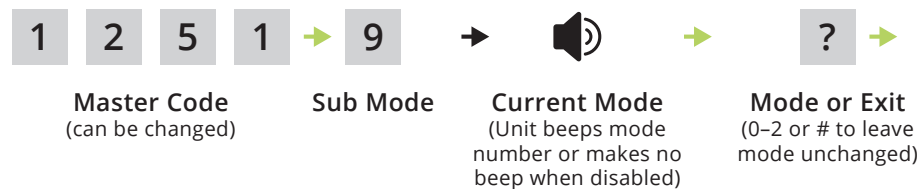
Turns on keypad unit when input is received from external device

Mode 3 - Remote Open Mode

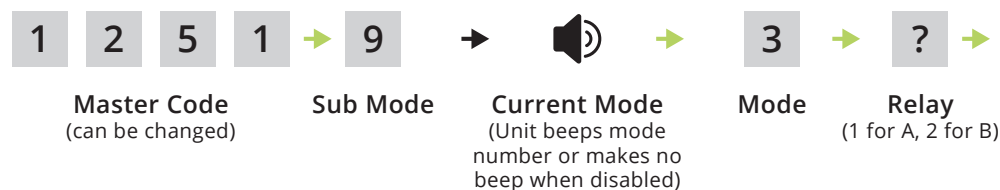
Triggers either Relay A or Relay B when input is received from external device

Mode 0 - Event Input Disabled

Set Mode 1, Mode 2, Disable, or Check Current Mode



Set Mode 3



NOTE: Green arrow indicates “good” tone on keypad. Always wait for good tone before moving on.

B Reset Procedures

NOTE: If an error is made during these procedures, an “error” tone will sound and you must start again from the beginning.

Master Reset

(Used if the Master Code is unknown, if the Latch Code is unknown and the unit is in Latch Mode, or if the Sleep Code is unknown and the unit is in Sleep Mode. All other codes will be retained after completing this procedure.)

Step 1 - Open faceplate on unit.

Step 2 - Disconnect power.

Gently unhook Wire Harness connector from circuit board. Note orientation of connector.

Step 3 - Press and hold Reset Button, reconnect power, then release Reset Button.

Gently reattach Wire Harness connector to circuit board. Unit will sound one (1) tone. Release Reset Button after you hear tone.

Step 4 - Press Star key (*) on keypad three (3) times.

Step 5 - Close faceplate on unit.

The Master Code is now reset to default (1251).

Unit Reset

(Used to reset unit to factory default settings. All codes are erased in this procedure.)

CAUTION: FOLLOWING THIS PROCEDURE WILL DELETE ALL CODES!

Step 1 - Open faceplate on unit.

Step 2 - Disconnect power.

Gently unhook Wire Harness connector from circuit board. Note orientation of connector.

Step 3 - Press and hold Reset Button, reconnect power, then release Reset Button.

Gently reattach Wire Harness connector to circuit board. Unit will sound one (1) tone. Release Reset Button after you hear tone.

Step 4 - Enter Pound (#) Star (*) Pound (#) on keypad. (Unit will sound “good” tone.)

Step 5 - Enter 1251 (Master Code) on keypad. (Unit will flash status LEDs and beep.)

Step 6 - While unit is beeping, disconnect and reconnect power.

Do this the same way as before. Unit will then go through power-up procedure.

The unit is now reset to factory default settings.

