



**1**

Unpack box and make sure you have all items shown here.  
(Screwdriver not shown.)



Ridge Reskey  
Unit



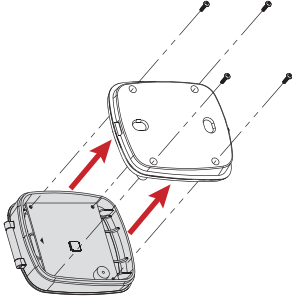
AAA Battery  
(2x)



Receiver  
(Security Brands 14-REC20  
or 14-REC300 not included)

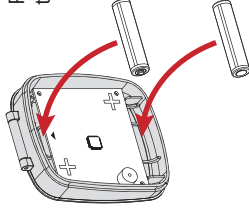
**3**

Remove screws from back of unit housing and carefully remove back cover to get access to battery holders.



**4**

Hold circuit board in place and insert batteries into battery holders, making sure to place in correct orientation.



Place unit on a sturdy surface to make this step easier.



**WARNING**

**AUTOMATIC GATES AND DOORS CAN CAUSE SERIOUS INJURY OR DEATH!**

**ALWAYS CHECK THAT THE GATE/DOOR PATH IS CLEAR BEFORE OPERATING!**

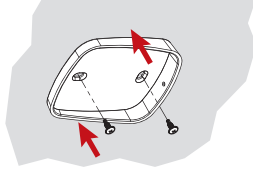
**REVERSING OR OTHER SAFETY DEVICES SHOULD ALWAYS BE USED!**

**6**

Install mounting plate where desired (hardware not included).  
(Can be done after programming.)

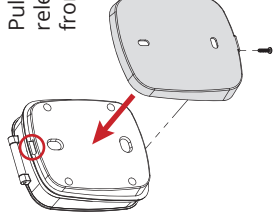
**! IMPORTANT!**

This unit is IP44-rated and has some protection from the elements, but it should be mounted in a covered location. Make sure to mount the unit away from metal objects and anything that will interfere with or block RF transmission.



**2**

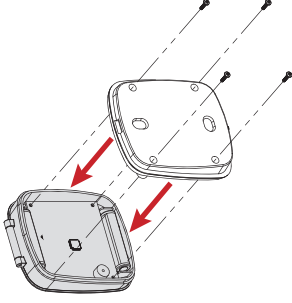
Remove single screw from bottom of unit and remove unit from mounting plate, pulling away from bottom end.



Pull away and down on unit to release mounting plate hook from unit groove (circled).

**5**

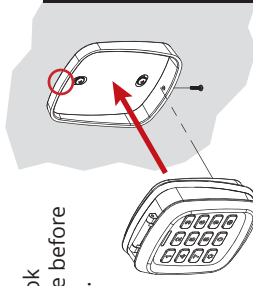
Replace back cover of unit and secure with screws.



**7**

Attach unit and secure with screw.  
(Can be done after programming.)

Slip mounting plate hook (circled) into unit groove before pressing unit into place.



## **A** 433-MHz Programming

(For the Ridge 2.0 Transceiver **14-REC20** only)

### Pair Keypad Unit with Ridge 2.0 Receiver (14-REC20)

On Ridge 2.0 Transceiver, press and hold programming button for two seconds and let go. LED will light. Perform procedure below, and LED will go out if pairing is successful.

1 2 5 1 → 9 → \*  
 Master Code (1251 is default)      Sub Mode      Channel (1 for A, 2 for B)

### Add 433-MHz Access Code

1 2 5 1 → 1 → — — — — #  
 Master Code (1251 is default)      Channel (1 for A, 7 for B)      Access Code to Be Added (4 digits; numbers only)

### Delete 433-MHz Access Code

1 2 5 1 → 2 → — — — — #  
 Master Code (1251 is default)      Sub Mode      Access Code to Be Deleted (4 digits; numbers only)

### Change 433-MHz Master Code

1 2 5 1 → 3 → — — — — #  
 Master Code (1251 is default)      Sub Mode      New Master Code (4 digits; numbers only)

### Add 433-MHz Limited-Use Code (Channel A Only)

1 2 5 1 → 8 → — — — — #  
 Master Code (1251 is default)      Sub Mode      Code to Be Added (4 digits; numbers only)      # of Uses (1-9)

### Delete All 433-MHz Codes

1 2 5 1 → 0 → 1 2 5 1 → #  
 Master Code (1251 is default)      Sub Mode      Master Code Again (1251 is default)      Unit will beep and flash and sound good tone when complete. → Signifies a good tone

## **B** 300-MHz Programming

(For 300-MHz receivers including the Receiver 300 **14-REC300**)

**IMPORTANT!** For security reasons we recommend using custom DIP switch positions.

### Add 300-MHz Access Code

9 9 9 9 → 1 → — — — — — — — —  
 Master Code (9999 is default)      Sub Mode      Receiver DIP Switch Positions (0 for off, 1 for on; 0101010101 is default)

— — — — → #

Access Code to Be Added (4 digits; numbers only)

### Delete 300-MHz Access Code

9 9 9 9 → 2 → — — — — #  
 Master Code (9999 is default)      Sub Mode      Access Code to Be Deleted (4 digits; numbers only)

### Change 300-MHz Master Code

9 9 9 9 → 3 → — — — — #  
 Master Code (9999 is default)      Sub Mode      New Master Code (4 digits; numbers only)

### Delete All 300-MHz Codes

9 9 9 9 → 0 → 9 9 9 9 → #  
 Master Code (9999 is default)      Sub Mode      Master Code Again (9999 is default)      Unit will beep and flash and sound good tone when complete. → Signifies a good tone

**!** Additional information can be found at [securitybrandsinc.com/ridge/](http://securitybrandsinc.com/ridge/)



## NEED HELP

Call (972) 474-6390  
 Email [techsupport@securitybrandsinc.com](mailto:techsupport@securitybrandsinc.com)  
 We are available **Mon-Fri / 8am-5pm Central**



**SECURITY BRANDS INC**  
 your *partner* in access control